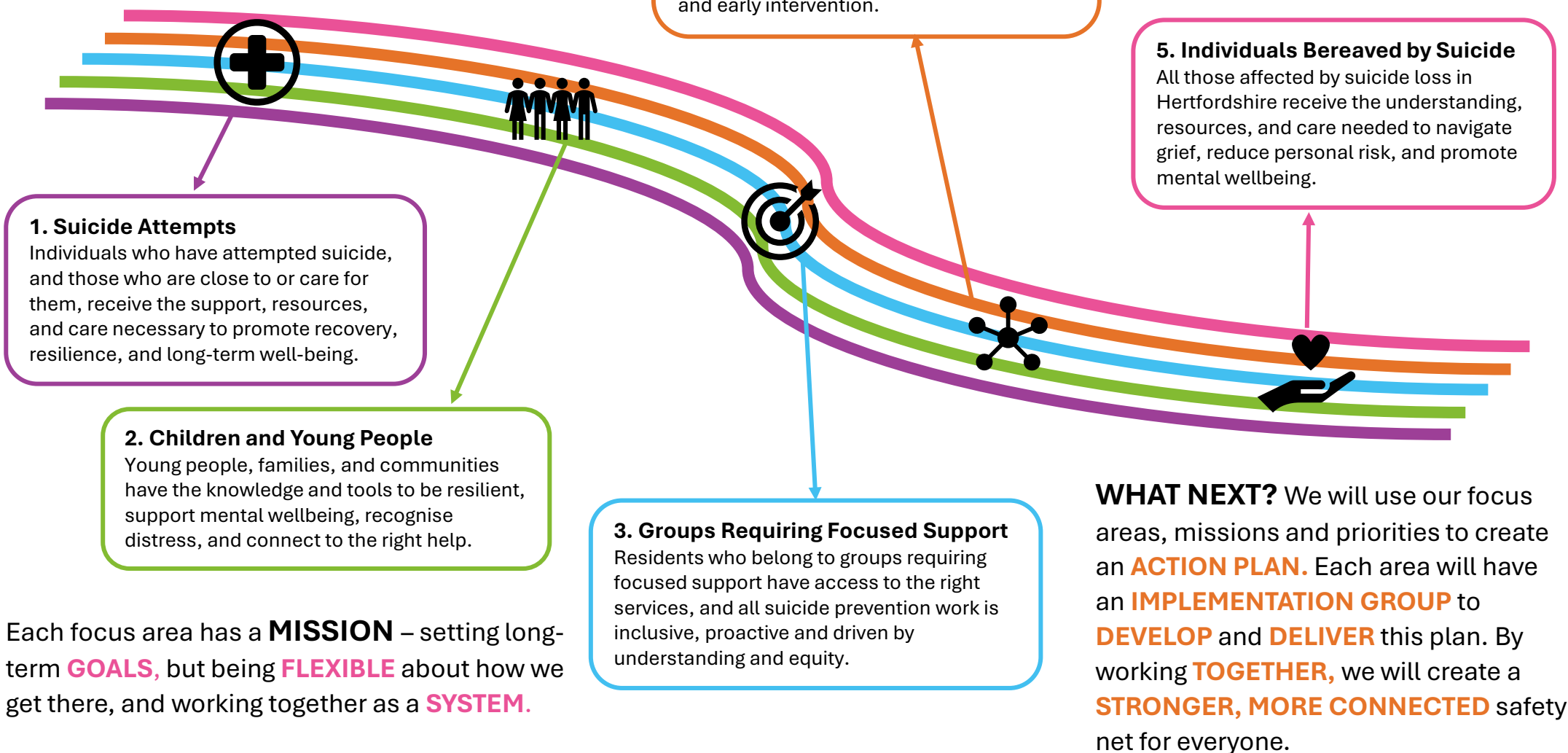


# Hertfordshire Public Health Suicide Prevention Strategy 2025-30 On a Page

Our **FIVE FOCUS AREAS** have been carefully shaped through a combination of **PUBLIC** and **PROFESSIONAL** feedback, local **DATA** and up-to-date **EVIDENCE**.



**OUR VISION:** Working **TOGETHER** with our partners to **PREVENT SUICIDES** and **PROMOTE MENTAL WELLNESS**, ensuring that every person in Hertfordshire feels **HEARD, SUPPORTED** and **EQUIPPED** with the help they need.

**WHAT NEXT?** We will use our focus areas, missions and priorities to create an **ACTION PLAN**. Each area will have an **IMPLEMENTATION GROUP** to **DEVELOP** and **DELIVER** this plan. By working **TOGETHER**, we will create a **STRONGER, MORE CONNECTED** safety net for everyone.